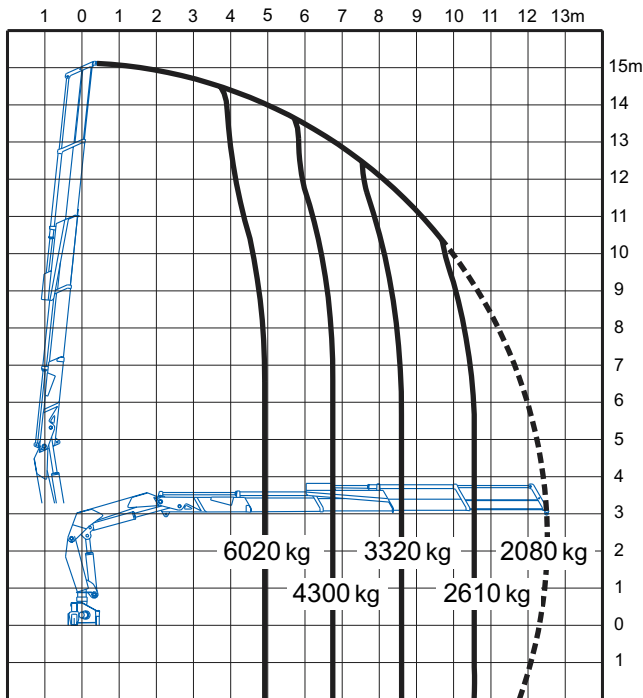
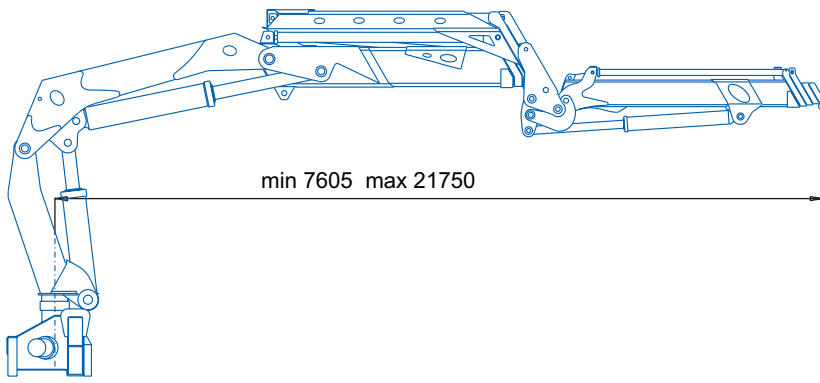
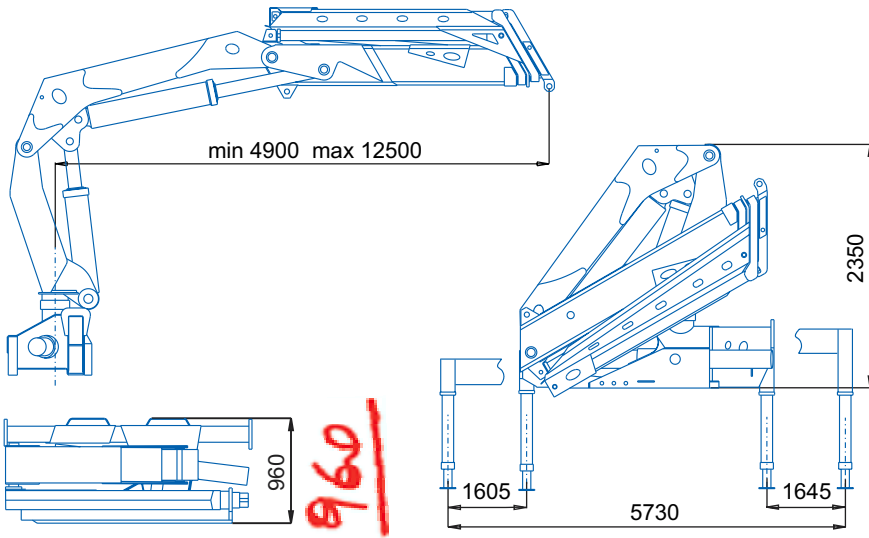
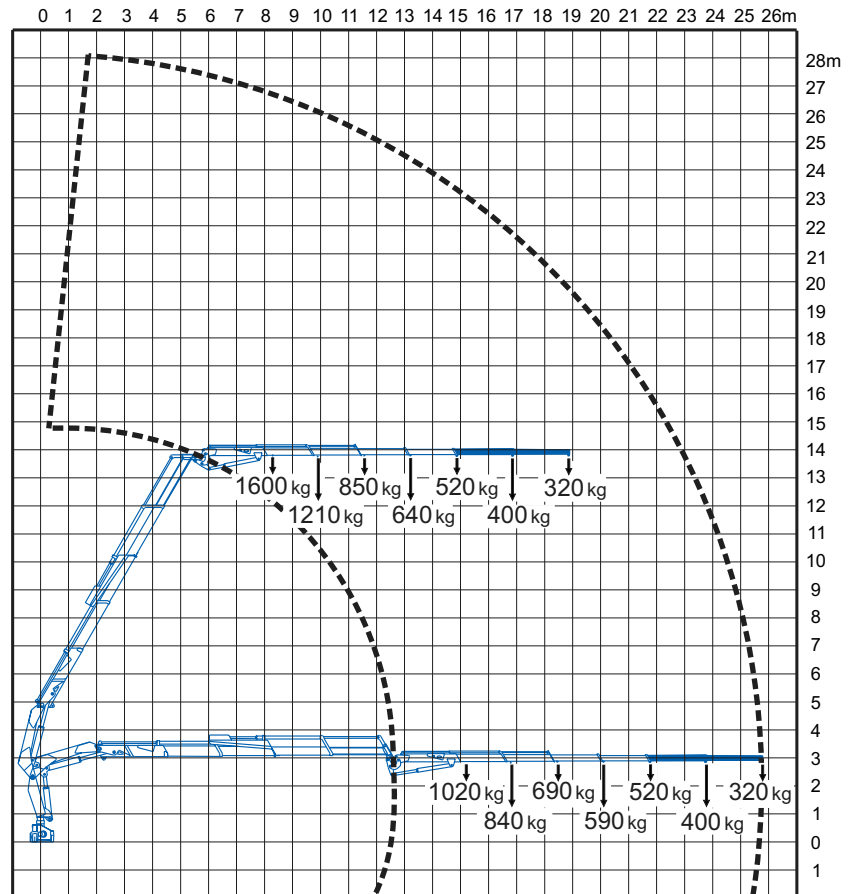


P 30500 XL/4SI + JIB 4SI



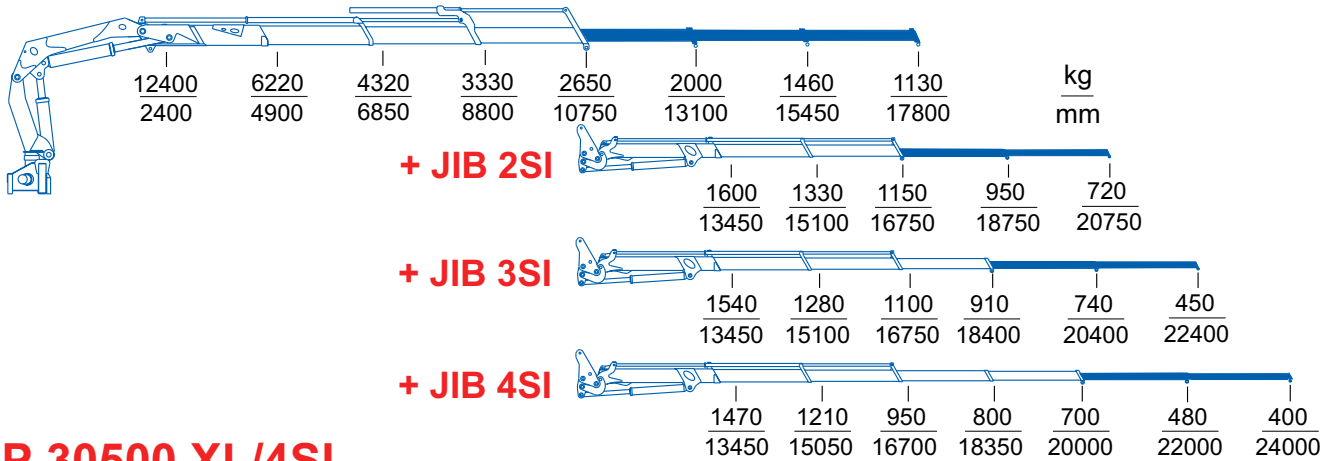
----- AREA DI LAVORO \ WORKING AREA
 ——— PORTATA CON LIMITATORE DI MOMENTO \ LIFT WITH LOAD LIMIT VALVE



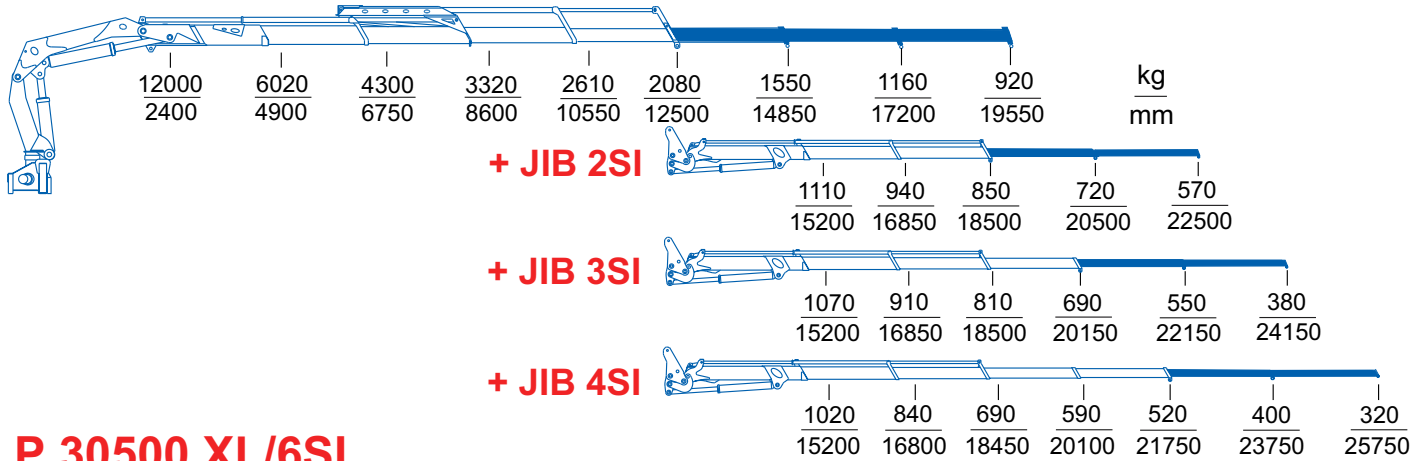
Ing. BONFIGLIOLI S.p.A. BOLOGNA-ITALIA

tel 051/6867214 fax 051/6867222 e-mail: cranes@ingbonfiglioli.it

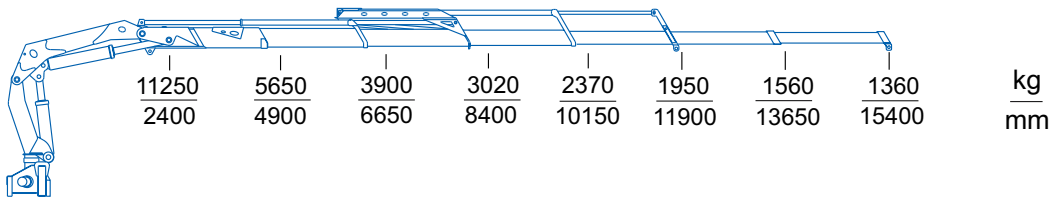
P 30500 XL/3SI



P 30500 XL/4SI



P 30500 XL/6SI



| P 30500 XL | 3SI | 4SI |
|--|----------|----------|
| massimo sfilo idraulico / max. hydraulic outreach / max. alcance hidráulico / rallonge hydraulique max / max. hydraulische Reichweite | 10.75 m | 12.50 m |
| minimo sfilo idraulico / min. hydraulic outreach / min. alcance hidráulico / rallonge hydraulique min./ min. hydraulische Reichweite | 4.90 m | 4.90 m |
| altezza massima / max height above installation level / altura max. desde el filo infer. de la base hauteur de levage au dessus du plan de pose / Hubhöhe ab Fahrzeugrahmen | 13.15 m | 15.05 m |
| portata pompa consigliata / recommended pump delivery / caudal bomba aconsejada debit d'huile recommandé Förderleistung der Hydraulikpumpe | 60 l/min | 60 l/min |
| pressione di lavoro / working pressure / presión de trabajo / pression de travail / Betriebsdruck | 320 bar | 320 bar |
| capacità serbatoio / tank capacity / contenance du réservoir / capacidad deposito de aceite / Inhalt des Öltanks | 94 l | 94 l |
| angolo di rotazione / slewing angle / angulo de giro / angle de rotation / Schwenkbereich | 402° | 402° |
| coppia di rotazione / slewing torque / momento de giro / couple de rotation / Drehmoment | 40.5 kNm | 40.5 kNm |
| altezza a riposo / height in folded position / hauteur en position repliée / altura en posición de reposo/ Höhe ab Fahrzeugrahmen zusammengelegt | 2350 mm | 2350 mm |
| larghezza a riposo / width in folded position / largeur en position repliée / anchura en posición de reposo/ Breite zusammengelegt | 2480 mm | 2480 mm |
| peso gru standard / standard crane weight / peso grua standard / poids grue standard / Eigengewicht des Standardkranes | 3810 kg | 4020 kg |

Ing. BONFIGLIOLI S.p.A. BOLOGNA-ITALIA