

**Ing. BONFIGLIOLI S.p.A.**

**CARICATORI**

LOADERS

CHARGEURS

KRANLÄDERS

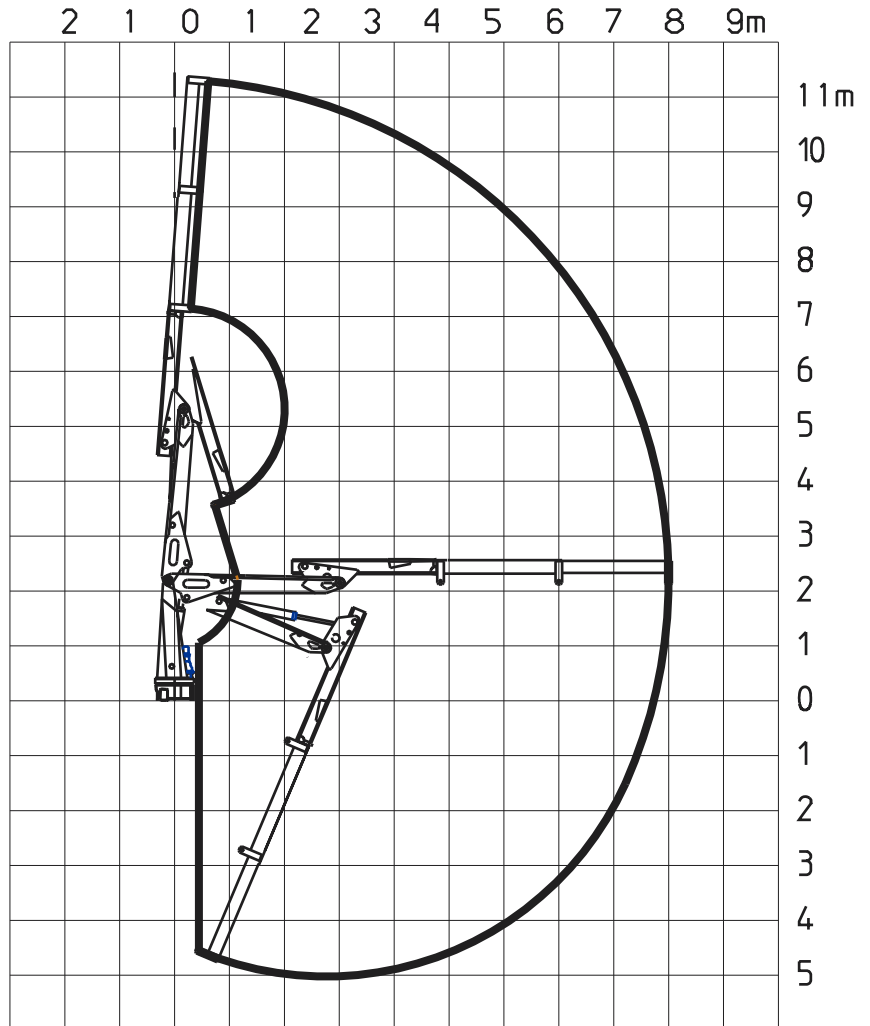
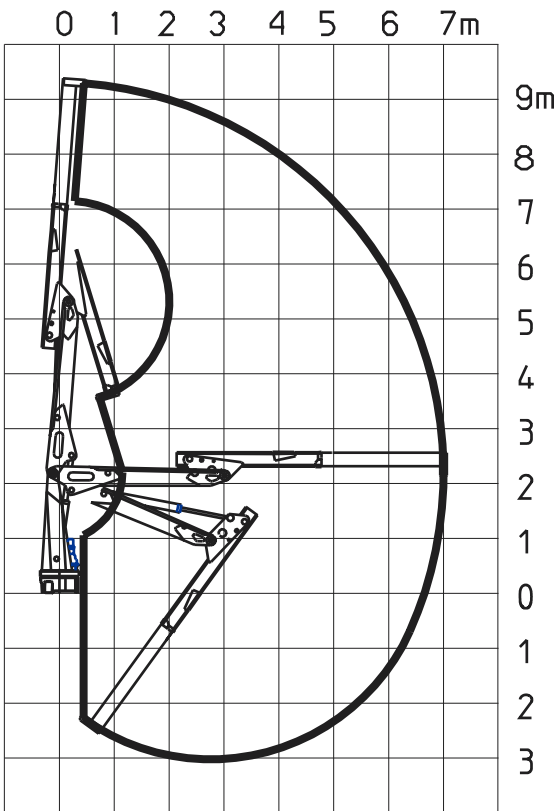
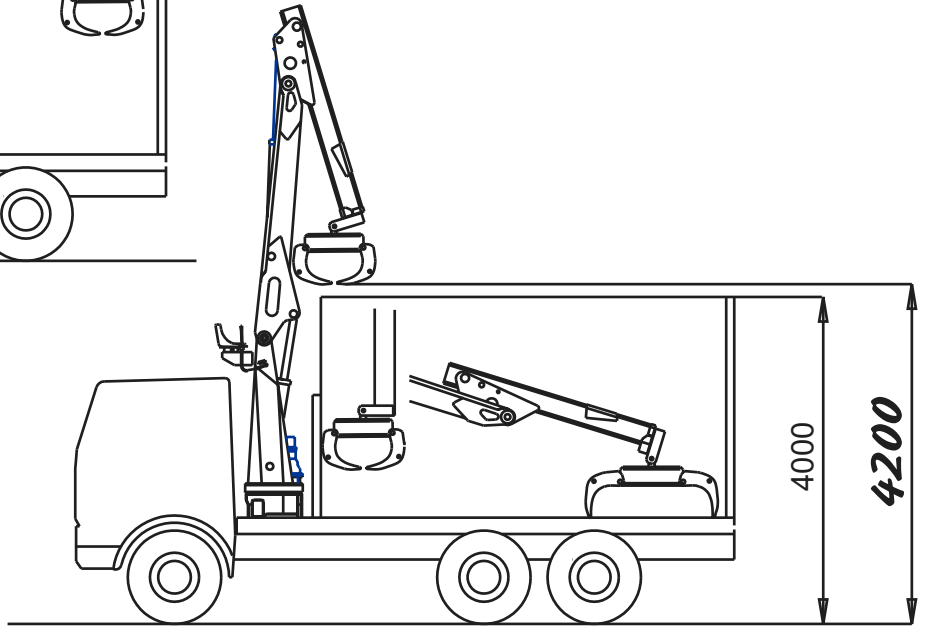
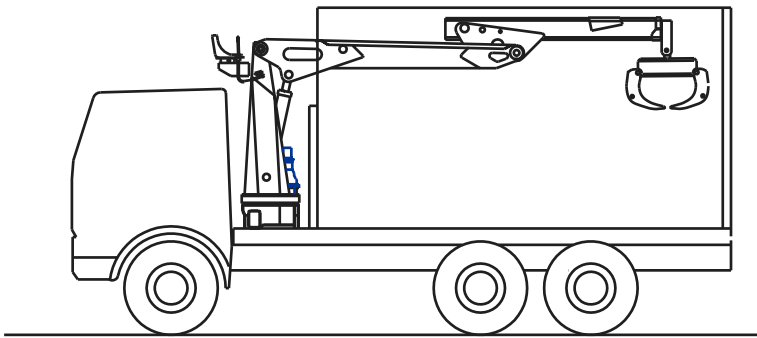
CARGADORAS

**P 14500 TR/1 - TR/2**

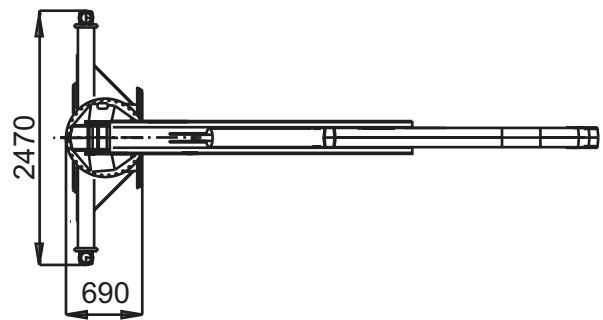
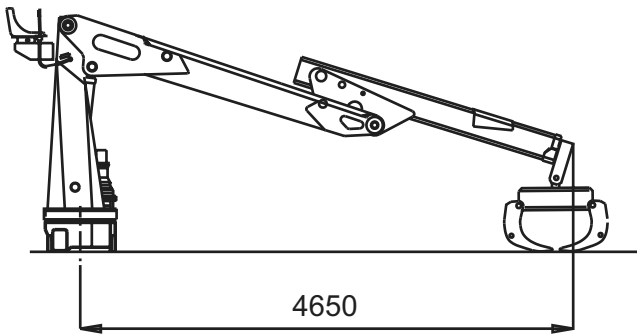
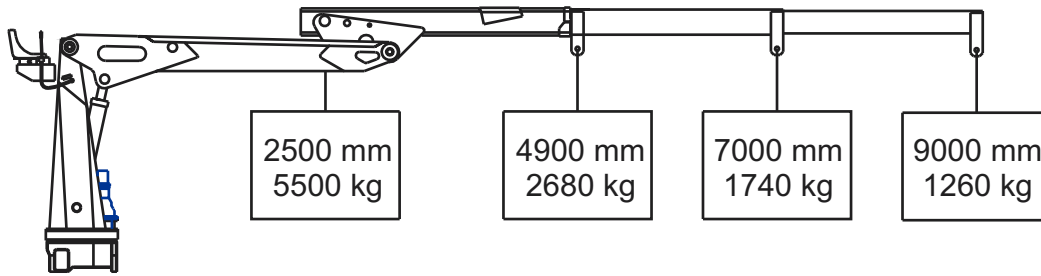
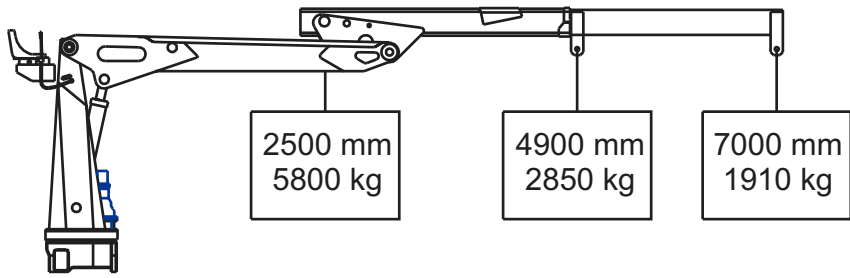
A ROTAZIONE CONTINUA



# P 14500 TR/1 -TR2



AREA DI LAVORO  
 WORKING AREA  
 SURFACE DE TRAVAIL  
 BETRIEBSFLÄCHE  
 AREA DE TRABAJO



	P 14500 TR/1	P 14500 TR/2
max. momento dinamico / max. dynamic moment / max. momento dinamico / moment dynamique max max. dynamisches Hubmoment	145 Knm	
massimo sfilo idraulico / max. hydraulic outreach / max. alcance hidraulico / rallonge hydraulique max. Max. hydraulische Reichweite	7,00 m	9,00 m
minimo sfilo idraulico / min. hydraulic outreach / min. alcance hidraulico / rallonge hydraulique min. Min. hydraulische Reichweite	4,90 m	
altezza massima / max height above installation level / altura max. desde el filo infer. de la base hauteur de levage au dessus du plan de pose / hubhöhe ab Fahrzeugrahmen	9,30 m	11,30 m
portata pompa consigliata / recommended pump delivery / caudal bomba aconsejada debit d'huile recommandé / Förderleistung der Hydraulikpumpe	45 l/min	
capacità serbatoio / tank capacity / contenance du reservoir / capacidad deposito de aceite Inhalt des Öltanks	80 l	
angolo di rotazione / slewing angle / angulo de giro / angle de rotation / Schwenkbereich	ROTAZIONE CONTINUA - CONTINUOUS SLEWING GIRO CONTINUO - ROTATION CONTINUE BESTÄNDIGE DREHUNG	

**Ing. BONFIGLIOLI S.p.A.** BOLOGNA - ITALIA

tel 051/6867214 fax 051/6867222 e-mail: [cranes@ingbonfiglioli.it](mailto:cranes@ingbonfiglioli.it)

TUTTI I DATI TECNICI POSSONO ESSERE CAMBIATI SENZA PREAVVISO - TOUS LES DONNÉES TECHNIQUES SONT SUJETTES A MODIFICATION SANS PREAVIS - ALL TECHNICAL DATA SUBJECT TO CHANGE WITHOUT NOTICE - TODOS LOS DATOS TECNICOS PUEDEN SER CAMBIADOS SIN AVISO - ALLE ÄNDERUNGEN DER TECHNISHEN DATEN OHNE VORANKÜNDIGUNG VERBEHALTEN